

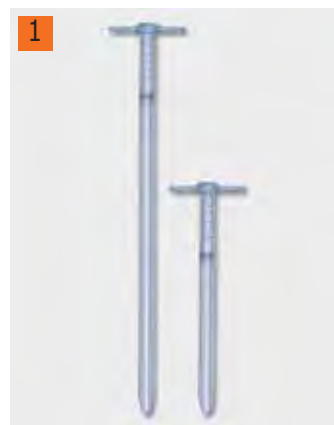
### 1 Pigment Lance

For pigments and pastes and agglomerating bulk goods.

Bürkle

- With half-open flute 50% for slightly adhesive products
- With one-quarter-open flute 25% for less adhesive products

Capacity ml	Flute opening	Length mm	Dia. mm	PK	Cat. No.
145	25%	300	30	1	9.303 710
85	50%	300	30	1	9.303 711
312	25%	600	30	1	9.303 712
179	50%	600	30	1	9.303 713
480	25%	900	30	1	9.303 714
273	50%	900	30	1	9.303 715



### 2 Disposable Samplers DispoSampler

**NEW!**

Bürkle

In numerous situations, rapid and contamination-free samples have to be taken. DispoSamplers are perfect for this application. They are individually packed and always ready to use. Avoid expensive decontamination or cleaning of soiled samplers.

Gamma sterilised versions are also available.

LiquiDispo

For liquids with low viscosity up to 10000cP.

MicroDispo

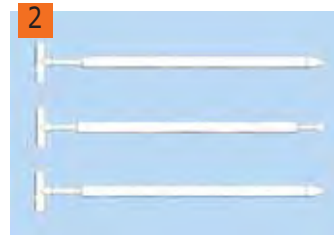
For semi-solid goods up to 0.5mm diameter.

ViscoDispo

For high viscous media up to 100000cP.

PowderDispo

Disposable sampler for taking a cross sectional sample from within a bulk powder.



Type	Length cm	Capacity ml	Material	PK	Cat. No.
LiquiDispo	500	100	PE-HD	20	9.303 720
LiquiDispo	1000	190	PE-HD	20	9.303 722
MicroDispo	500	10	PE-HD	20	9.303 728
ViscoDispo	500	100	PE-HD	20	9.303 732
ViscoDispo	1000	190	PE-HD	20	9.303 734
PowderDispo	620	100	PE-HD	20	9.303 736

Jars - please see page 23





### 1 2 Zone samplers, Multi/All-layer/Jumbo, steel V4A or aluminium

**NEW!**

For sampling bulk goods of all types. Available in various different lengths and materials:

*Bürkle*

#### Multi-sampler:

With several closed chambers for multi-target samples from several preset sample depths. Available in stainless steel V4A/PTFE, stainless steel V4A/V4A or Aluminium. Tube diameter: 25mm.

#### All-layer-sampler:

With open chambers for cross-sectional sampling through all layers of the sample. Emptied via the open tube end of the collector. Available in stainless steel V4A or aluminium. Tube diameter: 25mm.

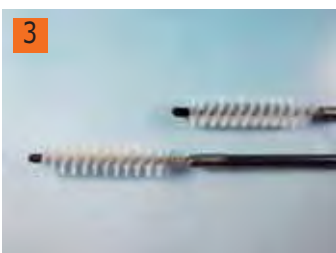
#### Jumbo-sampler:

Generally as the All-layer-sampler with open tube end. Tube diameter is 50mm making the sampler very good for coarser granule samples and large sample volumes. Available in stainless steel V4A or aluminium.

Easy emptying with the emptying device.



Type	Material	Length	Imm. depth	No. of chambers	Capacity	PK	Cat. No.
		mm	mm		ml		
Multi-Sampler	V4A/PTFE	550	430	3	14	1	9.303 860
Multi-Sampler	V4A/PTFE	850	710	3	17	1	9.303 862
Multi-Sampler	V4A/PTFE	1500	1355	5	17	1	9.303 864
Multi-Sampler	V4A/V4A	550	430	3	14	1	7.631 201
Multi-Sampler	V4A/V4A	850	710	3	17	1	7.653 124
Multi-Sampler	V4A/V4A	1500	1355	5	17	1	9.303 866
Cross-section sampler	Anodized aluminium	550	430	3	70	1	9.303 875
Cross-section sampler	Anodized aluminium	850	710	3	130	1	9.303 876
Cross-section sampler	Anodized aluminium	1500	1355	5	260	1	9.303 877
Cross-section sampler	V4A/V4A	550	430	3	70	1	6.232 190
Cross-section sampler	V4A/V4A	850	710	3	130	1	6.234 598
Cross-section sampler	V4A/V4A	1500	1355	5	260	1	9.303 865
Jumbo sampler	Anodized aluminium	850	710	3	390	1	6.240 956
Jumbo sampler	Anodized aluminium	850	710	3	880	1	9.303 878
Jumbo sampler	Anodized aluminium	1500	1355	5	1700	1	9.303 879
Jumbo sampler	Anodized aluminium	2500	2355	7	2900	1	9.303 883
Jumbo sampler	V4A/V4A	1500	1355	5	650	1	7.625 884
Jumbo sampler	V4A/V4A	2500	2355	7	910	1	6.236 850



### 3 Zone sampler, accessory cleaning brush, PVC/stainless steel

For basic cleaning of Zone samplers.

Length mm	Dia. mm	PK	Cat. No.
600	25	1	9.303 880
1000	25	1	9.303 884
1000	50	1	9.303 885



### 4 Emptying device, stainless steel

Emptying zone samplers were often a matter of patience and a steady hand. Now it's easier and faster with Bürkle's emptying device. Just lay the zone sampler onto the stainless steel stand, adjust the funnels along the sample chambers, and, after turning the sampler, the media will directly flow into the containers below. Quality materials ensure that the sampler is autoclavable.

*Bürkle*

Description	PK	Cat. No.
Emptying device	1	6.236 050

### 1 Sampler QuickPicker, Stainless steel V4A or PP



Suitable for removing bulk materials from sacks or large bags and depositing directly into sample bottles. Simple to use and clean. Crevice-free to prevent sample residues causing cross-contamination which could affect subsequent sample results. Complete with cleaning brush and two 250ml sample bottles.

Bürkle



Material	Length mm	Imm. depth mm	Capacity ml	PK	Cat. No.
PP	500	300	75	1	6.205 458
V4A	500	300	75	1	9.303 850

### 2 Sample bottles for QuickPicker Sampler

Bürkle

Type	Capacity ml	PK	Cat. No.
PE-LD, transparent	250	1	9.303 854
PP, transparent	250	1	9.001 062



### 3 Sampler Tubus, AISI 316 stainless steel, according to ISTA

Sampler for free flowing, bulk goods up to approx. 1cm diameter. This makes it possible, for example, to remove hazel nuts, blends of tea, grain or similar items from large sacks.

Bürkle

Operation: Insert Tubus into a sack to the desired sampling depth, while keeping the collection tube closed using your hand. When you take away your hand, the sample flows directly through the open tube into the container or sampling bag beneath it.

- choice of 2 lengths, 40cm and 80cm
- also for coarse-grained bulk goods
- AISI 316 stainless steel
- corresponds to ISTA standard for seed lengths of 10mm and 20mm



Type	Length mm	Dia. mm	PK	Cat. No.
Tubus	400	40	1	6.200 394
Tubus	800	40	1	6.204 492

### 4 Sampler Milk Powder, AISI 316 stainless steel, conforms to standards of DIN and IDF

Milk powder collector made of AISI 316 stainless steel, sterilisable. Developed especially for milk powder samples, conforms to standards of DIN and IDF (Int. Dairy Federation). The collector is inserted into bags or casks and the sample is removed using a semi-circular profile lance.

Bürkle



Type	Length mm	Imm. depth mm	Capacity ml	PK	Cat. No.
Milky	480	385	150	1	6.051 629

### 5 Spatula SteriPlast, PS, sterile



White spatula for powder, granules, pastes. With fixed handle, ideal for taking samples from sacks, containers or the manufacturing process. The rigid tip allows caked surfaces to be penetrated. Sterilised, single packed.

Bürkle



Length mm	Imm. depth mm	Capacity ml	PK	Cat. No.
228	152	36	10	6.059 018



### 1 2 Sampling scoops and spoons, PS, sterile

White. For disposable use. Individually packed.

Bel-Art Products

Type	Capacity ml	PK	Cat. No.
Scoop	60	1	9.150 461
Scoop	125	1	9.150 462
Scoop	250	1	9.150 463
Spoon	1,23	1	9.150 639
Spoon	2,46	1	9.150 640
Spoon	4,93	1	9.150 641
Spoon	14,79	1	9.150 642

Other sampling devices are available on request.



### 3 Sample bags SteriBag, PE, sterile

**NEW!**

Sterile, PE, liquid sample bags. For samples from chemistry, pharmaceutical, medical, food technology applications etc.

Bürkle

Type A: Without write-on panel

Type B: With write-on panel.

Type	Capacity ml	Width mm	Length mm	PK	Cat. No.
A	60	76	127	500	9.404 114
B	60	76	127	500	9.404 119
A	180	76	178	500	9.404 115
B	180	76	178	500	9.404 120
A	540	114	229	500	9.404 116
B	540	114	229	500	9.404 121
A	720	140	229	500	9.404 117
B	720	140	229	500	9.404 122
A	810	114	305	500	9.404 118
B	810	114	305	500	9.404 123
A	1650	178	305	250	6.223 094
B	1650	178	305	250	6.223 093



### 4 5 6 Control seals for sampling close-it®

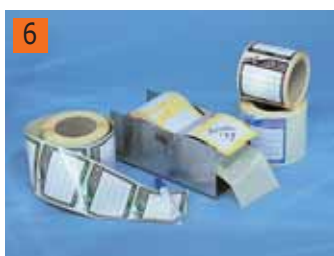
**NEW!**

Printed or plain. **close-it®** is an aluminium backed, vapour-proof adhesive label with extremely strong adhesion. Sacks, boxes etc. which have been pierced with samplers can be hermetically resealed. Can even adhere to slightly moist or dusty sacks coated with fine powders, e.g. plaster, flour etc.

Bürkle

#### close-itfood

The strength of the adhesive is almost as powerful as that of the original, the million-times proven close-it from Bürkle, and also ensures the necessary success when resealing sample openings, as it reliably prevents products from escaping after sampling. The adhesive complies with the European guidelines for foodstuffs. Just like the original, close-it food has a barrier layer of aluminum foil. This means that close-it food is suitable for sampling foodstuffs, pharmaceuticals, cosmetics, food additives - in short, for all applications in which the product must not be contaminated by contact with the adhesive.



Type	Colour	Description	PK	Cat. No.
Printed	red	Standard 95 x 95mm	500	9.303 910
Printed	green	Standard 95 x 95mm	500	9.303 911
Printed	yellow	Standard 95 x 95mm	500	9.303 912
Printed	blue	Standard 95 x 95mm	500	9.303 913
Printed	black	Standard 95 x 95mm	500	9.303 914
Plain	white	Standard 95 x 95mm	500	9.303 915
Roller		95 x 95mm	1	9.303 919
Printed	red	Maxi 150 x 150mm	250	9.303 980
Printed	green	Maxi 150 x 150mm	250	9.303 981
Printed	yellow	Maxi 150 x 150mm	250	9.303 982
Printed	blue	Maxi 150 x 150mm	250	9.303 983
Printed	black	Maxi 150 x 150mm	250	9.303 984
Plain	white	Maxi 150 x 150mm	250	9.303 985
Roller		150 x 150mm	1	9.303 989
Plain	white	Food 95 x 95mm	500	9.303 986
Printed	red	Food 95 x 95mm	500	6.228 255
Plain	white	Food 150 x 150 mm	250	9.303 990
Printed	white	Food 150 x 150 mm	250	9.303 991
close-it tape		Roll 95mm	1	9.303 992
close-it tape		Roll 150mm	1	9.303 993
close-it tape food		Roll 95mm	1	9.303 994
close-it tape food		Roll 150mm	1	9.303 995



#### 1 Anti-tamper seal seal-it, self-adhesive, roll

**NEW!**

Bürkle

If a container opening is closed with seal-it, then the container cannot be opened without destroying the seal-it label. seal-it is additionally provided with several cross-perforations which immediately tear when manipulated like a motorcar tax disc. seal-it can be used to securely seal bottles, sample bags, sacks, specimen bags, envelopes, etc. The white labelling field on seal-it can be written on with all conventional writing tools with, for example, contents information, sampling date, name of operator, etc.

- Clear identification via numbers in sequence
- Integrated control label with the same number, for accompanying documents
- Format 178mm long, 30mm wide
- Tear-off perforation for each label



Type	PK	Cat. No.
seal-it	500	7.622 477

#### 2 3 Sampler Silo drill, aluminium or stainless steel

**NEW!**

Bürkle

Designed for sampling powders, granulates or semi-solids from silos and vehicle tankers. When bulk goods are transported over a long distance (e.g. by HGV) the material can separate out, so if a sample is then taken only from the surface the result may not be representative. With the Silo drill a sample can be drawn from deeper levels. The Silo drill is screwed manually into the material and only opened once at the required sample depth. Depths of up to 2.5m can be reached by using extension rods. The Silo drill is not only suitable for silos, but also but can also be used in numerous bulk goods containers in the pharmaceutical, chemical, foodstuffs and semi-luxury goods sectors. Spiral diameter: 90mm, chamber: diameter 40mm, capacity 400ml.



Type	Length mm	PK	Cat. No.
Silo drill, aluminium	1500	1	9.303 858
Silo drill, V4A	1500	1	9.303 868
Extension rods	1000	1	9.303 859

Wide mouth bottles please see page 46.



#### 4 Liquid sampler MiniSampler, PE

Bürkle

Taking samples is quick, easy, clean and practical.

With the MiniSampler, the sample liquid only comes into contact with the suction hose and the sample bottle. Cross contamination is largely prevented. Bottles can be tightly sealed immediately after the sample is taken with a tamper-evident cap.

The single use, PE suction hose can be quickly replaced, ensuring that samples are never contaminated. A new hose can be used for each sample if required. Because of its small diameter (8mm) and flexibility the hose can reach sampling areas that are otherwise inaccessible.

**Accessories:**

Supplied with ten 100ml PE bottles, 10m of PE suction hose (6 x 8mm), 1 hose cutter , 1 stainless steel hose weight and 20 seal-it safety seal labels in a carrying case.



Type	PK	Cat. No.
MiniSampler	1	9.303 970



### 1 Sampler ProfiSampler, aluminium

**NEW!**

Bürkle

Vacuum-operated sample collector for sampling liquids in drums, tanks, road tankers, railway wagons, ships, lakes, ground water.

- can be supplied with optimized, straight suction tube for simpler sampling.
- transport case for tidy transport and disposal
- filling level control, automatic return flow and overflow protection by built-in venting valve.
- optimized draw volume: 200ml, suction pressure 0.5 bar and suction depth down to 4m of water.
- always check the chemical resistance of parts coming into contact with the sample.

wear protective clothing!

#### ProfiSampler Aluminium

Comprises: aluminium vacuum pump, with feet, venting valve and GL45 bottle thread, 1 x 500ml glass bottle, 5 x 220mm long, conductive, black PA suction tubes, 1 tubing cutter, 1 hose weight made of grade 304 stainless steel, 24 sample labels, 24 seal-it bottle seals, earthing cable.

Type	PK	Cat. No.
ProfiSampler Aluminium	1	6.225 622
PA suction tubes, black, 220cm length, pack of 10 pieces	10	6.226 207



### 2 Sampler Uni-Sampler "Ex", for sampling class A1 flammable liquids

Bürkle

Specially developed for sampling class A1 flammable liquids (e.g. benzene, petrol). Glass bottles and tubing electrically connected and grounded via an earthing cable. The "Ex" sampler was developed in cooperation with Gütegemeinschaft Tankschutz e.V.

#### Operation:

1. Earth the Uni-Sampler.
2. Lower the suction hose to the desired depth.
3. Attach the adapter to the sample bottle.
4. Generate vacuum with the hand pump and collect sample.
5. Remove the filled sample bottle, seal and label.

- PTB approval D-333-009 618/00
- Comprises 4m of sample tubing, glass sample bottle, manual vacuum pump and earthing cable in carry case

Type	PK	Cat. No.
Uni-Sampler "Ex"	1	9.303 831



### 3 Chemistry dippers, PP, with rod handle

Bürkle

Suitable for aggressive liquids. With beaker and PP rod handle.

Capacity ml	Length*	Stem dia. mm	PK	Cat. No.
250	1000	20	1	9.303 840
600	1000	20	1	9.303 842
1000	1000	20	1	9.303 844

\* Stem

### Sampling system TeleScoop

**NEW!**

Bürkle

TeleScoop is a versatile sampling system with exchangeable tools for a wide range of applications. The tools (angular beaker, pendulum beaker, bottle holder, stainless steel beaker and dip net) are attached to the rod by a practical snap-in joint. Ideal for sampling from baths, tanks, shafts, open water courses etc. Sampling depths down to 6m can be reached with the adjustable telescopic aluminium rod. Catch net for taking solid and organic samples from water courses.



### 4 Telescopic rods TeleScoop, aluminium

Bürkle

Aluminium, with red plastic fittings. New corrugated construction prevents the bars rotating during retrieval of a sample. With screw clamps and end-stops to prevent the sections sliding apart.

Length m	PK	Cat. No.
0,65 - 1,20	1	9.303 800
0,95 - 2,80	1	9.303 801
1,25 - 2,50	1	9.303 802
1,15 - 3,00	1	9.303 804
1,65 - 4,50	1	9.303 806
1,75 - 6,00	1	9.303 807

#### 1 Industrial dip samplers, sample beakers, angled for TeleScoop

With individually variable angle adjustment.

Bürkle

Capacity ml	Material	PK	Cat. No.
500	PP	1	9.303 810
1000	PP	1	9.303 812
2000	PP	1	9.303 814

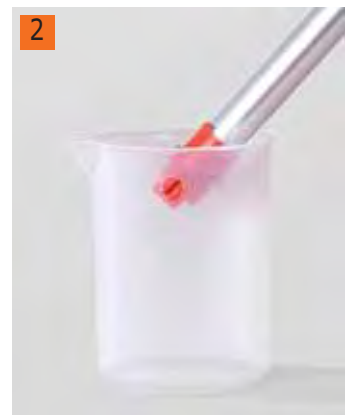


#### 2 Pendulum beaker for TeleScoop, PP

For industrial dip samplers. Automatically swings into a vertical position. Ideal for narrow shafts.

Bürkle

Capacity ml	Material	PK	Cat. No.
500	PP	1	9.303 820
1000	PP	1	9.303 822
2000	PP	1	9.303 824



#### 3 Bottle holder for TeleScoop, PP/PA

For industrial dip samplers. Holds bottles up to max. 88mm diameter. Suitable for plastic and glass bottles. With universal quick-action clamping strap.

Bürkle

Type	PK	Cat. No.
Bottle holder	1	9.303 830



#### 4 Dip sampler for TeleScoop, stainless steel

For pasty or powdery materials

Bürkle

- with lip for scraping
- sterilisable

Capacity ml	PK	Cat. No.
1000	1	9.303 846





### 1 behrotest® water samplers

For sampling from the water surface.

Behr

Adjustable clamping device and end rod made of stainless steel, with choice of sample container as indicated. For sampling in accordance with DIN 38409 to H14/AOX a 1 litre borosilicate beaker is required. With 3-part handle, which is continuously adjustable between 1 and 3.75 m. Ideal for use at sites which are difficult to access.

Type	Description	PK	Cat. No.
PB 1000	With boro. glass beaker	1	9.920 630
PF 1000	With dispensing bottle	1	9.920 631
PP 1000	With PP beaker	1	9.920 632
PT 1000	With PTFE beaker	1	9.920 633
PV 1000	With stainless steel beaker	1	9.920 634



### 2 3 Catch nets for TeleScoop

**NEW!**

Bürkle

Ideal for sampling from basins, tanks, shafts, open waters etc. The telescopic aluminium rods TeleScoop allow sampling up to 6m depth.

- For industries and water treatment
- Mesh width: 2mm up to 5mm
- Depth catch, net depth: 250mm

Type	Material	Dimensions (W x D) mm	PK	Cat. No.
Surface catch net	PVC / PA	310 x 280	1	9.303 828
Depth catch net	PP / PA	190 x 430	1	9.303 829



### 4 Sampler Vampire

Bürkle

For field sampling of liquids.

Portable, peristaltic tubing pump for all liquids. Ideal for sampling from drums, tanks, wells, water separators, sewage installations and treatment plants.

- Simple cleaning, liquids pumped only come into contact with tubing
- With rechargeable battery and charger
- Sample taken directly into specific sample bottle
- Maximum depth that samples can be withdrawn: 5m
- Also suitable for contaminated or particle-laden liquids
- Good chemical resistance
- High flow rate up to 2.0L/min.

Supplied with bottle basket, driving unit, battery charger, peristaltic pump and 5m of PE suction tubing.

Type	PK	Cat. No.
Vampire sampler, complete	1	9.303 851
Extension tubing, PE, 5m	5	9.303 839
Wide-mouth sampling bottle, 250ml	1	9.303 854
Wide-mouth sampling bottle, 500ml	1	9.303 855
Bottle holder for 500ml bottle	1	9.303 845



### 1 Sampler LiquiSampler, PTFE/FEP or PP

DIN 53242. For liquids. Choice of construction. PTFE/FEP for contamination-free sampling, or transparent PP. Practical push button, single-handed operation. Suitable for point, cross-sectional, and bottom sampling. Ideal for sampling from open and closed drums, kegs, tanks, silos, water sources (ponds, lakes, streams, rivers). Suitable for all commercial kegs and drums with openings of at least 25mm diameter. All surfaces are non-porous and crevice-free preventing accumulation of dirt. Only round-profile screwthreads, suitable for food hygiene applications, are used. Simple to dismantle and clean.

Bürkle



Material	Length mm	Dia. mm	PK	Cat. No.
PTFE/FEP	1000	25	1	9.303 950
PTFE/FEP	2000	25	1	9.303 951
PP, transparent	1000	25	1	9.303 955
PP, transparent	2000	25	1	9.303 956

### 2 Sampler ViscoSampler, PTFE/FEP or PP

Ultra-pure sampler with powerful suction for viscous substances. Choice of construction. PTFE/FEP or PP. Specially designed for viscous substances, such as lime water, slurries, wet clay and soil samples, sediment, oils, emulsions and creams. The filter flask sucks up and discharges the material. All surfaces are non-porous and crevice-free, preventing dirt accumulation. Only round-profile threads, suitable for food hygiene applications, are used. Allow easy dismantling and cleaning.

Bürkle



Material	Length mm	Dia. mm	PK	Cat. No.
PTFE/FEP	1000	25	1	9.303 960
PTFE/FEP	2000	25	1	9.303 961
PP	1000	25	1	9.303 965
PP	2000	25	1	9.303 966





### Liquid samplers, vessels and bottles

According to DIN 51750 pt. 2

Bürkle

#### Dipping Vessel

For sampling liquids from tanks, lorry tankers, etc. Made for Ex-use or stainless steel V2A. 1L capacity, 75mm diameter, 400mm high. Without lowering cable.

Operation: Lower vessel into liquid. Bottom and cap valves open automatically. Liquid flows through the vessel. The valves close at the target depth, and the desired sample can be collected.

#### Dipping bottle EX

For sampling flammable liquids.

For sampling group A mineral oil products, VbF Hazard Classes AI and AII. Made from brass that do not produce sparks, 75mm diameter, 385mm high, weight 3kg. Without lowering cable.

Operation: 1. Lower bottle into liquid. 2. Pull the cable when the target spot has been reached and the stopper opens.

3. Sample flows in. 4. Pull up dipping bottle and remove sample.

Use an electrically conductive, manually operated reel and lowering cable or chain.

#### Dipping bottle

For sewage disposal plants, sludge and water samples. Nickel-plated brass frame with glass sample bottle. 1000ml capacity, 125mm diameter, 330mm high, weight 3.1kg. Without lowering cable.

Operation: 1. Lower bottle into liquid. 2. Pull cable when target depth is reached and open stopper. 3. Sample flows in. 4. Pull bottle back up and remove sample.

#### Immersion Cylinders

For target spot and bottom samples of mineral oil products. Made of nickel-plated brass. Heavy, robust design (4.1kg). Without lowering and pull cables

Target spot sample: 1. Immersion cylinder is lowered in the tank to be sampled by the manually operated reel. 2. The separate pull cable is used to open the valve when the target spot is reached and the sample then enters the immersion cylinder.

Bottom sample: 1. Lower the immersion cylinder to the bottom. 2. The weight of the immersion cylinder opens the valve automatically when the bottom is reached and the sample then enters the immersion cylinder.

#### Target immersion cylinder

With the Target immersion cylinder, liquid samples can be taken from a particular point. The immersion cylinder is lowered on a strong and sealed tube. When the target has been reached, a valve at the tube end is opened. This vents the immersion cylinder and fills it with the sample. The immersion cylinder is pulled up and emptied via the screw thread. Weight 1.5kg. With 5m venting tube. Upper body unscrews for easy cleaning.

#### Mini immersion cylinder

For sampling liquids in narrow places where access is difficult. Can also be used in curved dipping tubes and barrels with narrow openings. Capacity 50ml, 30mm diameter, height 180mm, weight 280g. Without lowering cable. Upper body unscrews for easy cleaning.

Type	PK	Cat. No.
Dipping vessel, nickel-plated brass	1	9.303 935 <b>1</b>
Dipping vessel, stainless steel V2A	1	9.303 936
Dipping bottle (Ex)	1	9.303 937 <b>2</b>
Dipping bottle	1	9.303 938 <b>3</b>
Immersion bomb	1	9.303 939 <b>4</b>
Target immersion cylinder	1	7.623 934 <b>5</b>
Mini immersion cylinder	1	9.303 933 <b>6</b>



### 7 Accessories for liquid samplers, vessels and bottles

Bürkle

Description	PK	Cat. No.
Manual cable reel, PP green, without cable	1	6.200 263
Manual cable reel, black PP, electrically conductive, without cable	1	9.303 941
Manual cable reel Ex, black with grounding cable, without cable	1	6.234 815
Cable, V2A steel conductive	1	9.303 943
AISI 304 stainless steel lowering cable/PTFE-coated, length 10m	1	6.087 044